

# Review of 2010 Summer Operating Conditions

Southern Company Transmission Customer Forum

September 30, 2010

Destin, Florida

## TOPICS

- **2010 Weather Forecast and Actual**
- **2010 SOCO Balancing Authority (BA) Area Transmission Operating Conditions**
- **2010 Tropical Storm Activity through September**
- **Impacts of BP Oil Spill**
- **2010 Winter Forecast**
- **Summary**

- Summer 2010 Forecast
  - Slightly warmer than normal start to season, excessive heat not indicated..
  - Trending wetter as summer begins, a dry summer was not expected.
  - August wet and slightly cooler than normal.
- Tropical Cyclones 2010
  - 17 tropical cyclones; 10 hurricanes; 5 intense hurricanes.
  - 2 hurricanes threat to Gulf, with primary threat in Sept/Oct..

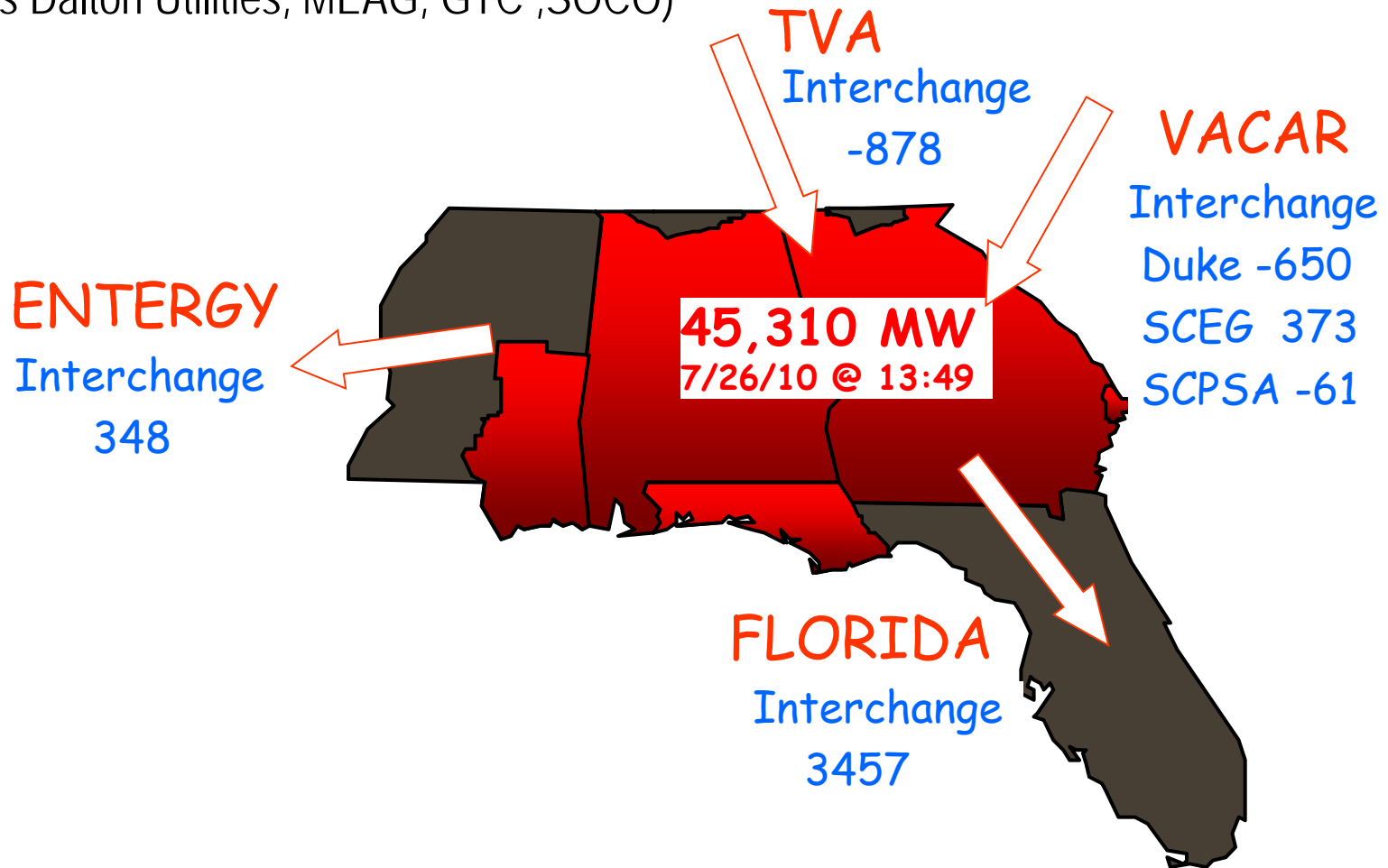


## Review: What we actually saw in 2010

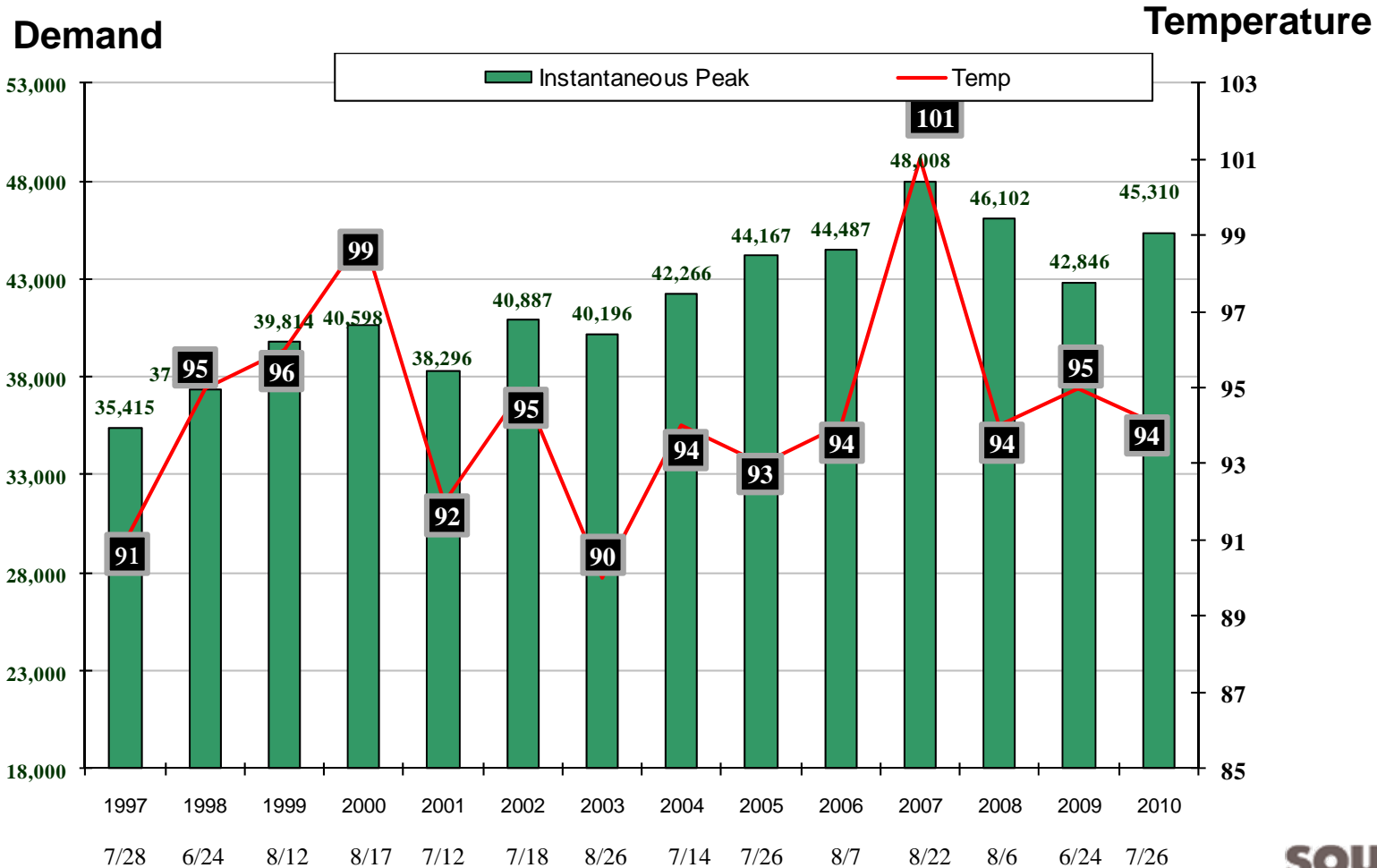
- Hotter than expected temperatures past summer – especially the lows
- To date, hurricanes have remained mostly in the Atlantic
- No operational issues due to BP Oil Spill
- Peak load of 45,310 MWs in the SBA

# 2010 SBA Peak Day Data

(includes Dalton Utilities, MEAG, GTC ,SOCO)

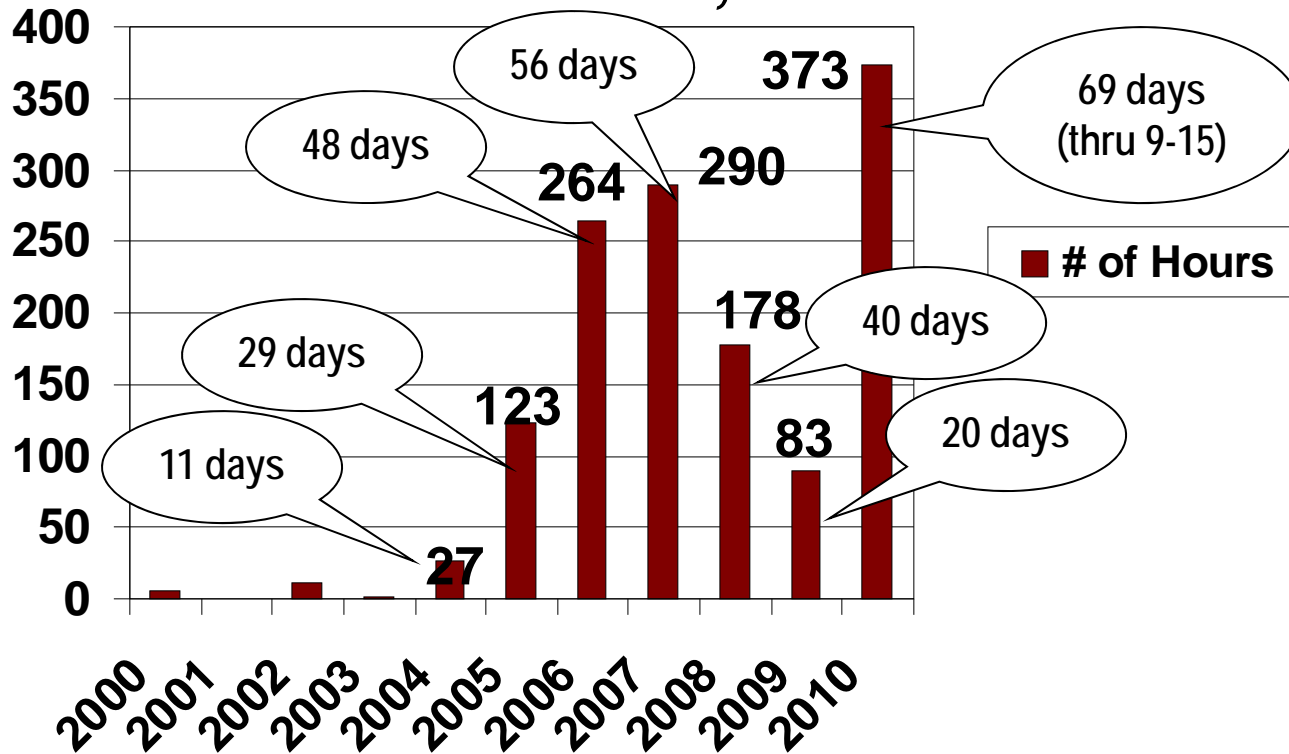


# Historical Peak Data

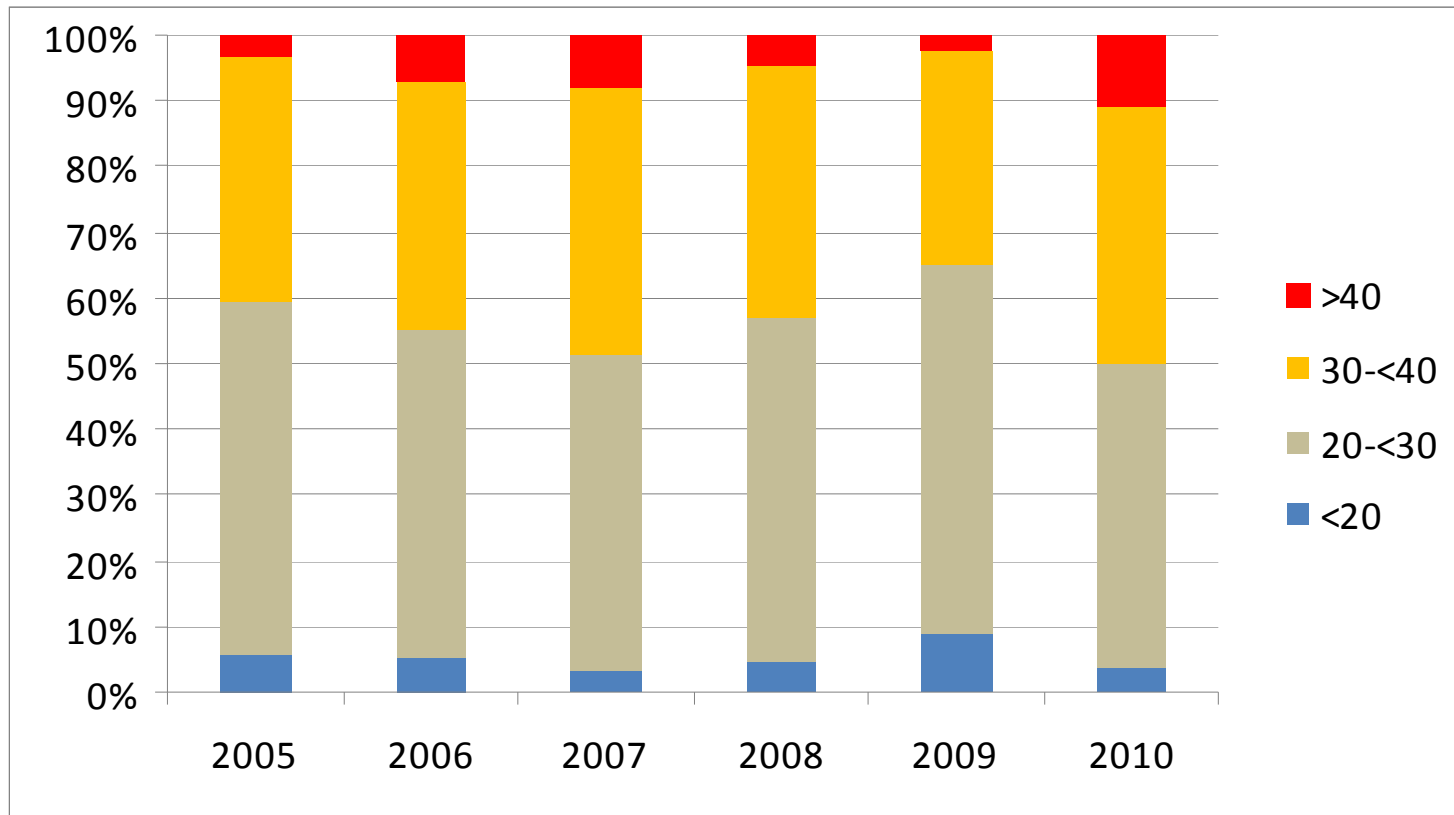


# The frequency of higher loads recover in 2010...

## Hrs. SBA Load > 40,000 MW



# Comparison of Load Levels May - September





# Hurricane Season Actual versus Forecast

Year	Observed Tropical Cyclones	Forecast Tropical Cyclones	Observed Hurricanes	Forecast Hurricanes	Observed Intense Hurricanes	Forecast Intense Hurricanes
2001	15	13	9	8	4	4
2002	12	8	4	4	2	1
2003	16	12	7	6	3	2
2004	15	14	9	7	6	2
2005	27	13	15	8	7	3
2006	9	16	5	9	2	4
2007	15	14	6	8	2	5
2008	16	13	8	7	3	3
2009	11	12	3	6	2	2
2010	14*	17	7*	10	5*	5

\*NOTE: 2010 observed values through September 29

## Review: BP Oil Spill

- Transmission studies were conducted to assess exposure and determine any necessary strategies to mitigate any potential negative impacts of generator forced outages due to oil spill
- Transmission studies showed that even at peak loads and worst case oil spill related generator forced outages, transmission security could still be maintained
- No oil spill related generator forced outages or transmission security issues encountered



- Winter 2010 / 11 Forecast
  - A La Nina winter
  - Cold winter in the Northwest – North-Central is predicted
  - Mild winter in the southern states – cold outbreaks can occur but are predicted to be limited
  - After a dry start in November, the southern states are predicted to be wetter than normal



QUESTIONS???

