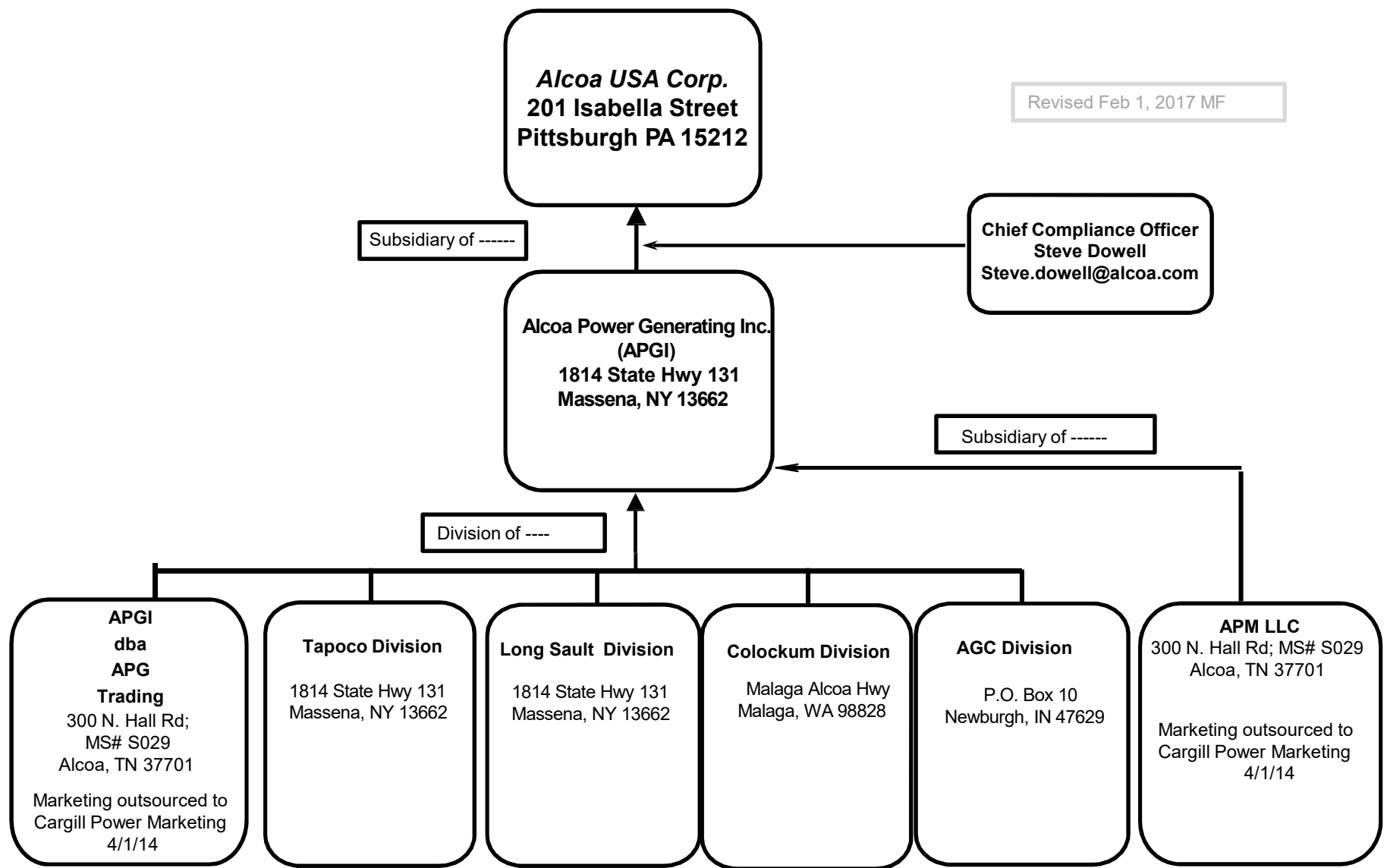


Revised Feb 1, 2017 MF



No facilities shared by Marketing and Transmission function employees.

JOB DESCRIPTIONS

President – Legal Officer

Chief Compliance Officer – Responsible for ensuring overall APGI compliance activities for all the registered entities and maintaining the corporate compliance plan.

President/Director (APM LLC)- Legal Officer

Vice President (APGI dba APGTrading) – Legal Officer

Contract Administrator & Compliance Technician (APMLLC, APGI dba APGTrading) – Responsible for Contract facilitation, guarantees & Compliance reporting.

Transmission-Function Employees:

Vice President (Long Sault/ Tapoco) – Responsible for maintenance, operations, and reliability.

Power Systems Manager – Oversees the Long Sault and Tapoco Division Transmission field operations and engineering functions.

Chief System Operator – Supervises Tapoco Division Dispatch Center daily operations.

Operator – NERC certified Operators for the Tapoco Division Transmission system.

Reliability Engineer – Performs engineering duties and planning studies for Tapoco Division.

Compliance Coordinator – Responsible for Division adherence to regulatory requirements. Assists in developing procedures.

Compliance Analyst – Responsible for technical documentation, developing procedures and assists other compliance personnel.

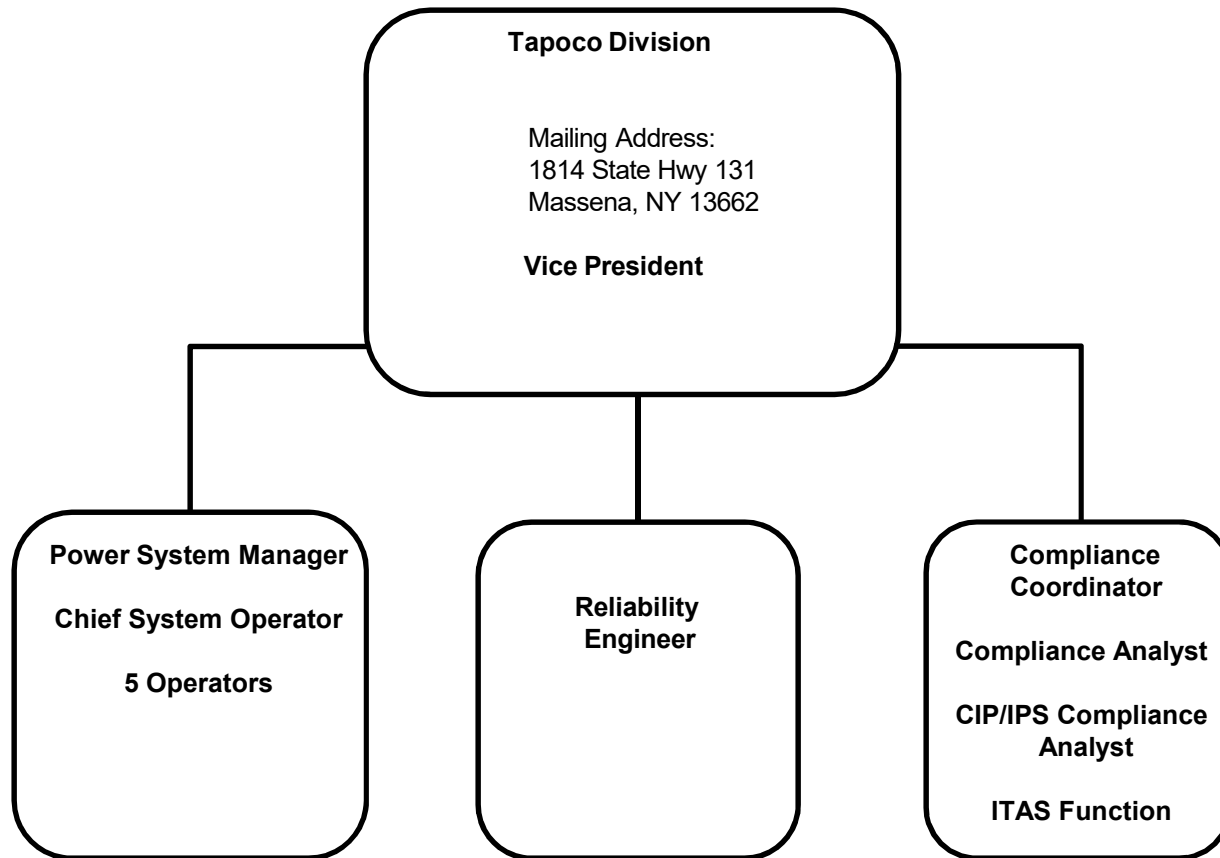
Power System Supervisor – Responsible for Divisions' maintenance, operations, reliability and compliance.

Power System Controller – Responsible for Long Sault power controls and operations.

CIPS/ IPS Compliance Analyst– Responsible for record keeping and assuring adherence to IPS/ CIP regulatory requirements.

ITAS – Responsible for technical adherence for IPS/ CIP regulatory requirements. Provides IT support to Transmission Function Employees.

Marketing – Function Employees: – All marketing functions outsourced to Cargill Power Marketing LLC.



**Long Sault Division
Massena, NY**

Mailing Address:
1814 State Hwy 131
Massena, NY 13662

Vice President

**Power System
Operator**

**Power System
Supervisor**

**Power System
Controller**